
THE
PRESIDENT
WOODROW
WILSON
HOUSE

ANNUAL REPORT

FISCAL YEAR
2025

HISTORIC PERSPECTIVES – MODERN INITIATIVES



Photo credit: Todd A. Smith

OUR MISSION

We are a property of the National Trust for Historic Preservation. We preserve and steward the house, with its collections and landscapes, and its full and dynamic history, and use them to provide forward-thinking and inclusive discussions, programs, and community activities that are relevant today.

OUR VISION

We use the backdrop of a historic house museum in the heart of Washington, D.C., to serve as a community resource and a hub for dialogue that explores current social, racial, political, and economic issues through the lens of history. We use this platform to examine our civil liberties and the ideals that unite us as Americans. We strive to be a trusted place to learn from the past. Our goal is to be a catalyst of change by confronting our shared history.

Woodrow Wilson House, accredited by the American Alliance of Museums, is working tirelessly to maintain our high standard of excellence



We want you to be a part of our mission and vision! Explore gift opportunities, including preservation, talent, exhibitions, events, education initiatives, and programming. Please contact Executive Director Elizabeth Karcher at 202-792-5808 to be part of the future of the Woodrow Wilson House.

Create your legacy by scanning this QR code and giving today.

LETTER FROM THE EXECUTIVE DIRECTOR

This year has marked meaningful progress and renewed purpose at the President Woodrow Wilson House. As stewards of this National Trust property, we remain dedicated to strengthening the museum by using the power of place to inspire honest reflection, civic participation, and global understanding.

It has also been a year of personal significance for me. I valued the opportunity to lead private tours and to welcome dignitaries, fashion designers, scholars, and thought leaders. Hosting Speaker Emerita Nancy Pelosi during the ***Fashioning Power, Fashioning Peace Gala*** was a particular privilege. These visits highlighted the growing importance of the Wilson House as a forum for dialogue and discovery.

In welcoming visitors, advancing scholarship, and expanding educational initiatives, the museum continued to broaden its reach and deepen community connections. We marked major milestones, including hosting our seventy-fifth scholar and completing essential preservation work during our seasonal closure, all while sharing the Wilson House story with new audiences on site and throughout the region.

Our exhibitions and programs continued to spark dialogue, elevate diverse perspectives, and attract national attention. The conclusion of ***Moving Toward Transparency: Woodrow Wilson's Legacy at 100*** and the growing momentum of ***Fashioning Power, Fashioning Peace*** underscored the museum's role as a platform where history, culture, and public service intersect. Media partnerships and public engagement strengthened this visibility and reinforced the museum's place in conversations on leadership, diplomacy, and American history.

In the pages that follow, you will find highlights from this year's work across visitor engagement, educational programs, community outreach, exhibitions, preservation and restoration.

As we look ahead to the opening of ***Wilson's Washington, America's Struggle: Race and Civil Liberties in the Capital***, the nation's 250th anniversary, and the critical HVAC campaign, we remain committed to ensuring that the Wilson House endures as both a place of preservation and purpose. We also look forward to an even more dynamic third edition of our signature event, ***Fashioning Power, Fashioning Peace Exhibition and Gala***, building on the strong momentum surrounding this program.

Thank you for standing with us as we steward this extraordinary home and its legacy. With your partnership, the Wilson House will continue to illuminate the past, enrich the present, and shape the conversations that define our democracy.



Elizabeth A. Karcher
EXECUTIVE DIRECTOR
PRESIDENT WOODROW WILSON HOUSE
EKarcher@WoodrowWilsonHouse.org

VISITOR ENGAGEMENT

In FY25, we conducted **general tours, 30-minute highlight tours, and five specialty tours.** We also offered **five neighborhood walking tours** and **a native plant garden tour.** When open, the museum welcomed visitors **six days a week** and saw strong participation, including more than **1,400 guests during the Dupont-Kalorama Walk Weekend** and record numbers at our **exhibitions** and at our annual **gala.** Online presence continued to expand visitor engagement with regular social media posts and newsletters.



Visitors in the Native Plant Garden



Visitors at the Fashioning Power, Fashioning Peace Gala

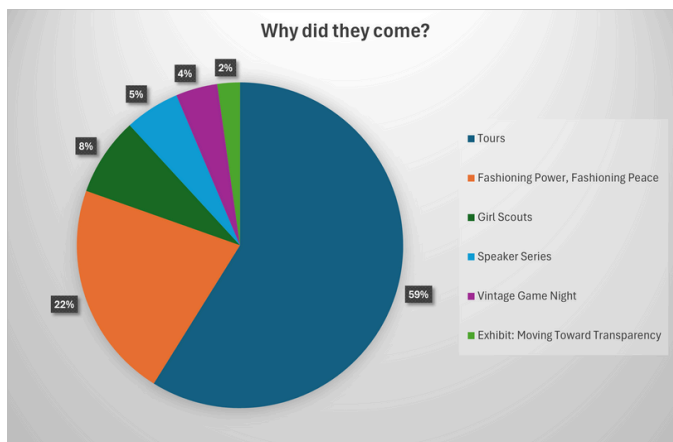
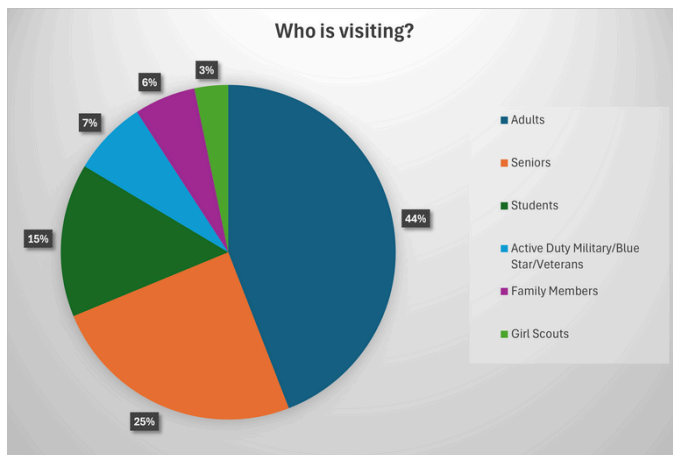


Visitors at the Fashioning Power, Fashioning Peace Gala



Visitors at Vintage Game Night

VISITOR STATISTICS



Visitors to the Woodrow Wilson House include **local residents, students, scholars, diplomats, and travelers from across the country and around the world.** They come to experience an authentic historic home, engage with nuanced interpretations of Wilson's legacy, and explore how the issues of his era, such as democracy, civil liberties, race, diplomacy, and global leadership, continue to shape the nation today. Many guests also visit for our **exhibitions, educational programs, and community events,** seeking a deeper understanding of American history through the lens of a preserved presidential residence.



(left to right) ED Elizabeth Karcher, RADM Susan Blumenthal (Ret.), Gala Chair Janet Pitt, Rep. Debbie Dingell



Visitors outside the museum



Visitors at the *Fashioning Power, Fashioning Peace* exhibition



Visitors viewing the *Fashioning Power, Fashioning Peace* exhibition



Visitors from the National Trust for Historic Preservation

EDUCATIONAL PROGRAMS

We welcomed families and children of all ages to the museum throughout the year. Our **Speaker Series**, moderated by Advisory Council member Joel Danies, Ambassador of the United States of America (Ret), pictured below with Dr. Eliot Cohen, drew more than **150 attendees** for talks by distinguished **historians, scholars, authors, and artists**. We hosted **over 100 Girl Scouts** and their chaperones as the girls pursued one of the **four Girl Scout badges related to civics, democracy, jewelry making (in honor of Edith Wilson), and suffrage**, offered for Brownies, Juniors, and Cadettes. Additionally, we hosted **three leadership workshops for college-age students**.

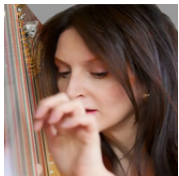
Our **Volunteer Scholars Program** further strengthened the educational mission of the Woodrow Wilson House. Scholars contributed original research, project support, and interpretive work that enriched our exhibitions and public programming. Their dedicated efforts form a vital part of how we engage and inspire individuals at every stage of life.



Eliot Cohen
"The Future of
America's Foreign and
Defense Policies"



Gregory Cooke
"Black Rosies - Reflections on
the Contributions of African
American Women in WWII"



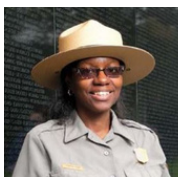
Professor Suzanna Klintcharova
Bulgarian Harpist in Concert



Dorothy and Thomas Hoobler
"Are you Prepared for the
Storm of Lovemaking?"



L.H. Moore
"Past Future: Afrofuturism,
Preservation and Place"



**MSG Elizabeth
Helm-Frazier and
Dr. Turkiya Lowe**



"Remember
Women's
Contributions to
World Wars"



Director Gregory Cooke (back row, c.), with featured subjects of *Black Rosies* (seated), along with museum staff and friends



Students from Ronald Regan Leadership
Program training at the Wilson House



Dr. Klintcharova in the Drawing
Room



Susan King (l.), Dorothy Boggess (r.) featured
in *Black Rosies*, with ED Elizabeth Karcher (c.)



Dr. Cohen and Ambassador Danies

GIRL SCOUTS



Girl Scouts tour

Total number of Badge Programs: 12

- **Brownies- *Fair Play*: 3 programs**
- **Juniors- *Playing the Past*: 1 program**
- **Juniors- *Craft and Tinker*: 6 programs**
- **Cadettes- *Democracy*: 2 programs**

VOLUNTEER SCHOLARS PROGRAM



Summer cohort of Wilson House Scholars Program with staff

Now in its **fifth year**, the President Woodrow Wilson House Volunteer Scholars Program is a cornerstone of our educational mission. Offered both remotely and on site, the program has **educated 75 participants** from **more than 30 schools and universities**. This year's scholars contributed to research, interpretation, and special projects that support the museum's exhibitions and public programs. Collectively, scholars have dedicated over **10,000 volunteer hours**, strengthening the museum's capacity to engage audiences and deepen understanding of Wilson's legacy. Learn more about their individual projects through the "Scholars in Action" link on our website.



Winter cohort of Wilson House Scholars Program with staff

Participants have been students and graduates from these colleges/universities:

American University
Boston University
Concordia College
University of California-Berkeley
University of California- Davis
University of California-San Diego
University of Chicago
Elon University
George Mason University
Georgetown University
The George Washington University
Goucher College
Howard University
Johns Hopkins University
Luther College
University of Maryland-College Park
Morgan State University
Nebraska Wesleyan University
Rice University
Roanoke College
Spellman College
University of Toronto
Trinity College
Union College
Washington & Lee University
Wittenberg University

Participating High Schools:

Albert Einstein High School, MD
The Madeira School, VA
Sidwell Friends, DC
Thurgood Marshall Academy, DC
Wilton High School, CT



Summer cohort creates Shark Week exhibit

COMMUNITY OUTREACH

We welcomed **more guests free of charge than ever before**, advancing our commitment to **broad public access**. The **Dupont-Kalorama Walk Weekend**, **Mitchell Park Day**, and **more than 10 days of free tours and Open House events** connected us with **thousands of visitors**. We hosted quarterly **Vintage Game Nights**, participated in **Museums Advocacy Day** organized by the **American Alliance of Museums (AAM)**, partnered with the **DC Preservation League**, and offered professional development for our staff at sites across Washington, DC. Outreach programs extended to **Thoreau Middle School in Vienna, VA**, and the **General Federation of Women's Clubs (GFWC)**, **Woman's Club of Chevy Chase, MD**. The museum also served as headquarters for the **International LGBTQ+ Past in the Present** pop-up exhibition during **WorldPride in Washington, D.C.**, and was a proud partner of **Civic Season**, sponsored by **Made by Us**.



Visitors provide feedback for Civic Day Question:
"What do you wish for America for its next 250 years?"



Staff on the Hill for Museum Advocacy Day



Advisory Council and staff welcome "Edith" from Edith Bolling Wilson Birthplace Museum on International Women's Day as part of *Edith Wilson's Fashionable Legacy*



Visitors contribute to National Pride exhibit, *Past in the Present*





John Pucher (l.) with Mac Deford, Woodrow Wilson's great-great-grandson (r.) in Library



Staff on the Hill for Museum Advocacy Day



Serving as Headquarters for historic sites across the United States during WorldPride 2025 celebration



ED Elizabeth Karcher (l.) with Marion Klein (r.) speaking at the GFWC Woman's Club of Chevy Chase, MD



Staff teaching civics at Thoreau Middle School, VA



Welcoming local students to the museum

FREE COMMUNITY EVENTS & OPEN HOUSE DAYS INCLUDED:

October - Mitchell Park Day

November - Veterans Day commemoration

December - Honoring Wilson's birthday - wreath-laying at the Washington National Cathedral

March - International Women's Day Celebration - *Edith Wilson's Fashionable Legacy*

April - Free on Earth Day to visit the Native Plant Garden and Sheridan-Kalorama Neighborhood Association meeting

May
Dupont- Sheridan-Kalorama Walk Weekend Open House and Free Memorial Day tours and program

June - Free tours June 19th, Juneteenth, and Open House and LGBTQ+ *Past in the Present* Headquarters during WorldPride 2025, hosted in DC.

IN THE NEWS

The Woodrow Wilson House continued to serve as a gathering place for national conversations on **leadership, culture, and history**. *The Georgetown* hosted its **Cultural Leadership Breakfasts** at the museum, while **PBS** filmed an episode of the *American Masters* series on site. Network **WETA** also filmed an episode for its acclaimed series *If You Lived Here*. **CNN** produced segments for *The Whole Story with Anderson Cooper*, hosted by correspondent Kaitlan Collins, featuring Anita McBride, former Chief of Staff to First Lady Laura Bush, and *Washington Post* Associate Editor and First Lady biographer Mary Jordan. **WUSA 9** interviewed Advisory Council ex officio member **Cary Fuller**, Edith Wilson's great-nephew, at the **National Cathedral's** annual **wreath-laying ceremony** on 28 December, commemorating Wilson's birth. In honor of Mother's Day, Jimmy Alexander of **WTOP** interviewed Advisory Council member **Rebecca Roberts**, author of *Untold Power*, a biography about Edith Wilson's historic legacy as First Lady. Executive Director Elizabeth Karcher spoke at the preservation conference **PastForward** in New Orleans on the Wilson House **Native Plant Garden**.

Media coverage for *Fashioning Power, Fashioning Peace* outreach included **Fox5, The Georgetown, Hollywood on the Potomac, The Diplomatic Watch, WTOP** ("DC hosts its own Met Gala at the Woodrow Wilson House"). Internationally, the event was recognized by outlets such as **New Zealand Herald, Azertac, Saudi Gazette, TV Gula, and Telemundo**.



Kaitlan Collins (l.) and Anita McBride interview in the Dining Room



Cary Fuller, Advisory Council ex officio member, interviewed at National Cathedral



In celebration of the National Trust's 75th anniversary, Jay Clemens, the interim President was interviewed in the Library



Dr. Mark Benbow's interview in the Drawing Room: A Historian's Perspective



Anita McBride (l.) and Kaitlan Collins (r.) with ED Elizabeth Karcher (c.) in the Dining Room

MEDIA RECOGNITION



New York Weekly



thegeorgetowndish



IF YOU LIVED HERE

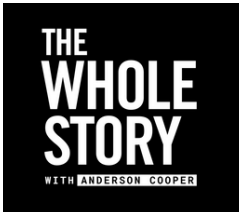


TELEMUNDO

CULTURAL
LEADERSHIP
BREAKFASTS



FASHIONING FOR SOCIAL ENVIRONMENTAL JUSTICE



EXHIBITIONS

The Woodrow Wilson House continued to uphold the highest professional standards in collections care and interpretation, reflected in **our successful reaccreditation by the American Alliance of Museums - an honor achieved by fewer than three percent of museums nationwide**. This recognition underscores our dedication to excellence while advancing compelling scholarship through two major exhibitions this year: ***Fashioning Power, Fashioning Peace***, and ***Moving Toward Transparency: Woodrow Wilson's Legacy at 100***. Together, these initiatives strengthened our role as a trusted steward of history and a leader in innovative public interpretation.



Moving Toward Transparency: Woodrow Wilson's Legacy at 100 drew substantial attendance to the gallery, and hundreds of visitors participated in the concluding interactive activity: **"What is Your Calling?"** 50% of respondents stated that **VOTING** is how they will define THEIR legacy for generations to come.

For one week in May, the ***Fashioning Power, Fashioning Peace*** exhibition transformed the museum, with fashions from **53 countries**. In only its second year, attendance at the exhibition on the opening day **tripled**. Over the days that followed, an additional **280 visitors** toured the exhibition, culminating in record attendance during the **European Union Embassy Open House Weekend**.



Traditional Dress in the Gallery

HIGHLIGHTS FROM THE *FASHIONING POWER, FASHIONING PEACE* EXHIBITION



Diplomatic and First Ladies Attire in the Library



Gowns and Wedding Gowns in the Dining Room



Modern Attire in the Drawing Room

PRESERVATION AND RESTORATION

Winter Work, Lasting Impact

During the winter closure, Wilson House staff and contractors completed a series of essential restoration, cleaning and repairs to preserve the historic home and improve its daily operations. Highlights include the following projects overseen by John Pucher, Senior Manager of Operations.

Restoration

- Large 2nd-floor mirror restored
- Edith Wilson dining room portrait frame restored
- Sally Bolling portrait frame restored
- New draperies in the Dining Room installed

Systems & Security

- Temperature & humidity monitors installed
- Chauffeur patio electrical work and garage breaker box repairs completed
- Silver safe security sensor installed

Cleaning & Care

- Visitor carpets steam-cleaned — historic carpets remain untouched
- Paint and storage room cleaned and organized
- Silver collection cleaned
- Chandeliers cleaned

Repairs & Maintenance

- Liquor Room lock and door repaired
- Terrace and handicapped entrance screen doors replaced
- Emergency repairs to the front downspout near the trash hall
- The dining room table's loose board secured
- Historic kitchen plaster wall repairs
- Staff stairwell wall repairs (1st floor to trash hall)
- Loose historic kitchen tiles secured in place
- Minor hardwood floor scratch repairs
- Walls behind sink/toilet in 4th-floor bathroom repaired
- Gallery walls repaired and painted



Repairing the leaking side roof



Repairing the terrace of the second floor adjoining bedrooms



Cleaning the chandelier in the Drawing Room



Repairing the steps outside the Solarium



Repairing the balcony



Repairing the White House mirror on main landing



Repairing the White House mirror on main landing



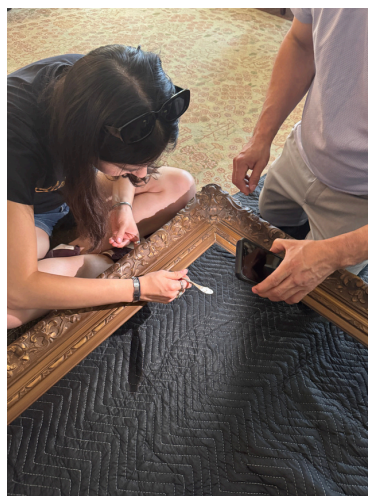
Gilding detail



Preparing new draperies for the Dining Room



Restoring the gold leaf on frames



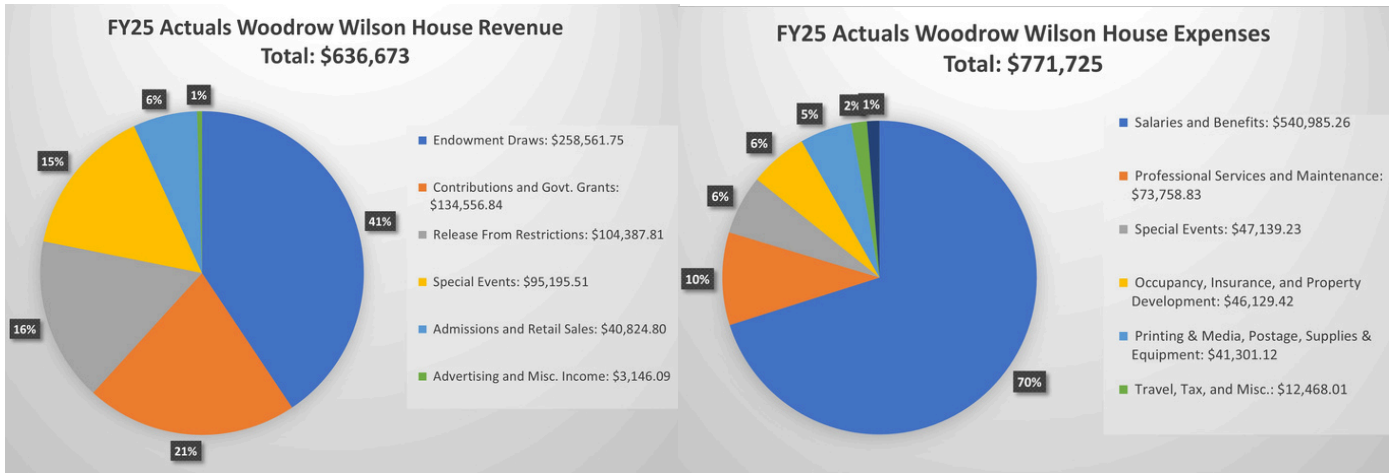
Repairing frames in the Dining Room



Repairing the frame of Edith's portrait in the Dining Room

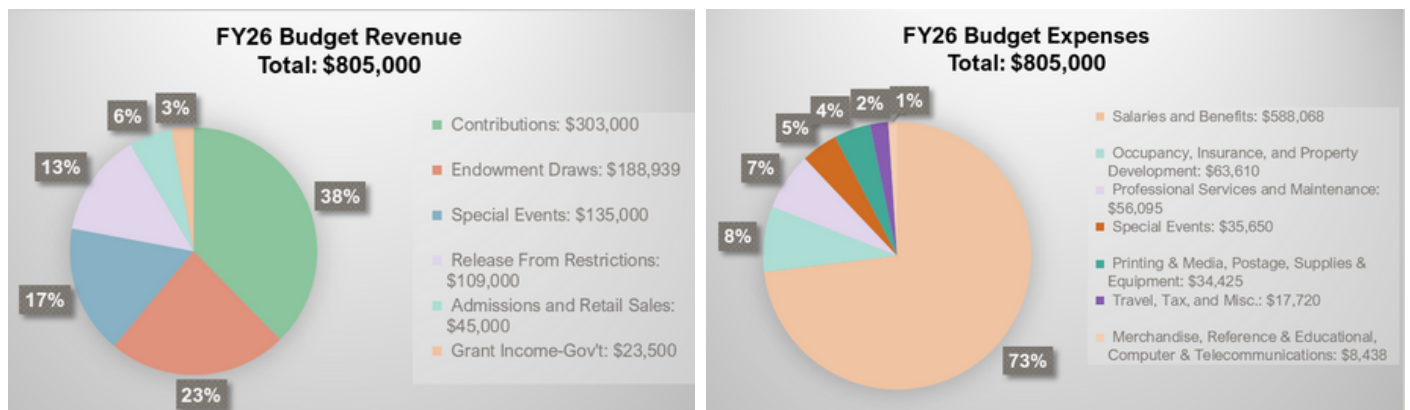
Financial Information

FY25 REVENUE & EXPENSES



To safeguard the historic structure and its nationally significant collections, the Wilson House was forced to remain closed for four months because its deteriorating climate-control systems left the building without reliable heating or air conditioning. This preservation-driven closure, while necessary, created an unavoidable shortfall in earned revenue.

FY26 BUDGETED REVENUE & EXPENSES



The FY2026 budget reflects a careful balance between maintaining operations and laying the critical groundwork for our HVAC capital campaign. Continuing seasonal closures, which are necessary to protect the house and its collections until a climate-control system is in place, will limit earned revenue. Meanwhile, enhancing investments in preservation planning and pre-construction assessments is crucial for long-term stability. Our financial approach for FY2026 is intentionally conservative, aligning reduced revenue with strategic fundraising and prudent cost management to ensure continuity of programs and mission-driven work.

FY 2025 Highlights

The museum established a dedicated fund to support its *Fashioning Power, Fashioning Peace* initiatives, strengthened by significant contributions from the **Rita Adrosko Charitable Trust** and a private donor. The Wilson House continued to expand its presence in Washington as a place where diplomacy meets fashion, resonating with the sentiment, **“New York has the red carpet, Washington is the world stage.”**

The Gala attracted over **350 guests**, resulting in a **twofold increase in attendance**, and **included 18 ambassadors, members of the United States cabinet**, as well as leaders from the **diplomatic, military, cultural, business, fashion, and philanthropic sectors** from around the globe.

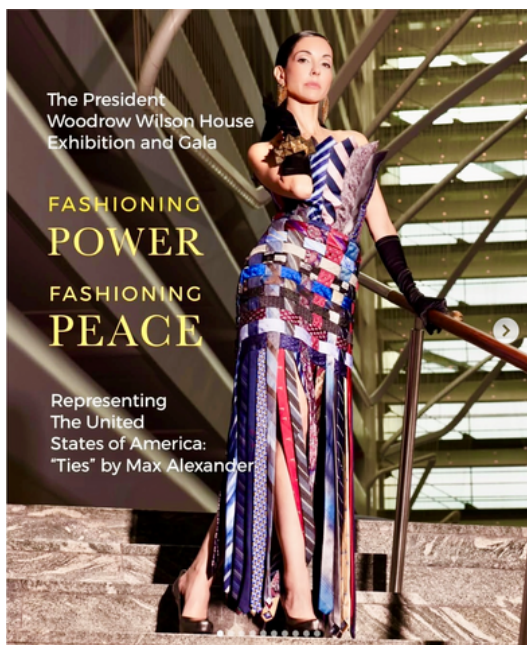
Speaker Emerita Nancy Pelosi received the iconic **Esther Pin**, designed by **Ann Hand**, and **Janet Pitt served as Gala Chair**. The exhibition also highlighted nine-year-old designer **Max Alexander**, an internet sensation whose **“Ties”** dress represented the United States and conveyed how we are each unique as individuals, yet, when interwoven, we represent the rich fabric of America.



Speaker Emerita Nancy Pelosi accepting the Esther Pin, with ED Elizabeth Karcher and Gala Chair Janet Pitt



Ambassadors, designers, business executives, and arts leaders captivated us with remarkable examples of diplomatic fashion



The United States was represented by 9 year-old Max Alexander's "Ties" dress



(left to right) Gala Chair Janet Pitt, Speaker Nancy Pelosi wearing the Esther Pin, and ED Elizabeth Karcher

TEMPORARY WINTER CLOSURE

The museum was closed to the public from December 15, 2024, through April 1, 2025, to protect the building and its nationally significant collections.

The Situation

The 109-year-old steam heating system within the House has failed. Frequent pipe breaks have led preservation experts to recommend maintaining a constant temperature of 55 degrees during winter, necessitating the museum's closure to the public. Environmental monitors have recorded temperatures ranging from 48 to over 90 degrees, which fall outside the accepted museum standards of 65 to 75 degrees, as well as humidity levels between 38% and over 80%, exceeding the acceptable range of 45-55% relative humidity.

There is an urgent need for a modern system capable of providing reliable, year-round environmental control. Both the building and its collections are at ongoing risk.

The Solution

We engaged an engineering firm to design a system suitable for a landmark structure and completed a competitive process to select a contractor prepared to carry out this critical work.

With engineering plans and a contractor bid in place, we are advancing grant applications and philanthropic outreach. We have secured \$750,000 from the National Trust for Historic Preservation and must raise an additional \$2 million to begin installation and ensure the site's long-term stability.

This winter, December 15, 2025 - March 15, 2026, the museum will operate on a limited schedule, offering tours at 12:00 p.m., 1:00 p.m., and 2:00 p.m. on Saturdays. Visitors are encouraged to dress warmly, as interior temperatures will remain at 55 degrees for preservation purposes. The team remains available online throughout the temporary winter closure.

Stewarding the Wilson House for future generations remains our highest priority. Your support ensures its future. Contact us to learn how you can help.



In November, museum staff members don coats, hoods, and gloves for their team meetings held indoors

OUR WORK CONTINUES



The Esther Pin



Our American Alliance of Museums Accreditation

Looking Ahead to FY2026

The coming year marks an important chapter for the President Woodrow Wilson House as we build on recent progress and prepare for a dynamic season of exhibitions, outreach, and preservation. We begin by opening ***Wilson's Washington, America's Struggle: Race and Civil Liberties in the Capital***, an exhibition that brings new research and community perspectives to the foreground and anchors our fall and winter programming.

We will continue taking our mission beyond our doors through educational programs, civic talks, and cultural partnerships brought directly into classrooms, community centers, embassies, and public events across the District of Columbia. Meeting audiences where they are will broaden engagement, strengthen local ties, and sustain visibility throughout the year.

On-site, we will advance key restoration and preservation projects that protect the House and its irreplaceable collections. Priority efforts include climate-control improvements, conservation of historic finishes and furnishings, and work that prepares the property for the long-term HVAC installation. These steps respond to vulnerabilities revealed during last year's winter closure and reinforce responsible stewardship of this landmark.

We will also expand ***Fashioning Power, Fashioning Peace***, now a signature initiative. Our third season in 2026 will begin with a special International Women's Day preview and will feature an expanded network of designers, embassies, and cultural partners, continuing to elevate women's leadership and international collaboration.

Beloved traditions will continue. The garden will welcome visitors in the spring and fall, and our full calendar of public and specialty tours will return during open months. At the same time, we will explore new revenue opportunities to offset losses from our required winter closure, including expanded fundraising, refined earned-income strategies, enhanced digital content, and new partnerships.

With a clear focus on maintaining AAM accreditation, visibility, sustainability, and community connection, FY2026 positions the Wilson House for continued growth and strengthened impact.

ADVISORY COUNCIL

ADVISORY CHAIR

Zachary Burt

ADVISORY COUNCIL

Ambassador Ervin Bushati, (Albania)

Dr. John Milton Cooper

Dr. Jonathan Coopersmith

Isaac Cosby Hunt

Ambassador Joel Danies, Ret. (United States)

Kevin Eckstrom

Edward F. Gerber

Derek Gray

Leslie Koelsch

Gregory Hoss

Amanda Innes

Ambassador Lilit Makunts (Armenia)

Dr. Diane T. McRae

Kelly Minton

Ambassador Georgi Panayotov (Bulgaria)

Rebecca B. Roberts

Ambassador Miloslav Stasek (Czech Republic)

Prof. Katherine Tachau

Stanley Watters

EX OFFICIO

Cary Clark Fuller

Harriet Sayre McCord

EXECUTIVE DIRECTOR

Elizabeth A. Karcher



Staff, Guides and Advisory Council explore the National Cathedral

STAFF, GUIDES, AND VOLUNTEERS

STAFF

Elizabeth A. Karcher, Executive Director

Felice Herman, Deputy Director

Edith Michel, Senior Manager for Education and Collections

Maxwell Miller, Historic Site and Events Manager

John Pucher, Senior Manager for Business and Operations

Stacey Wilson-McMahon, Volunteer Scholars Program Coordinator

GUIDES

Robert (Jacob) Anderson

Fay Arrington

Barbara Bates

Jeremiah Bradley

Bonnie Calhoun

Claire Fergusson

Dominik Firlej

Mark Holan

Hannah Karkari

Linda Lippner

Tom Marabello

Neil McLeroy

Katie Moniz

James (Ross) Morrison

Carol Newell

Mallory Page

Denise Smith

Paul Sullivan

Maggie Wald

Luke Withycombe

Thomas Yovino

VOLUNTEERS

Joshua Barr

Joshua Krauss

David Steigman



Volunteer prepares lighting for an exhibit



Preparing the Gallery walls for an exhibit

Photo credits throughout this report: Thank you, Tony Powell, Joy Asico, Patricia McDougall, and Wilson House staff, for beautifully capturing the visitors, events, and purpose of the museum.

DONORS

President's Circle (\$50,000 and above)

Rita Adrosko Charitable Trust

Ambassadors (\$25,000-\$49,999)

Cary C. Fuller

Lin Lin

Guardians (\$10,000 - \$24,999)

Anonymous

Atkiss Family Charitable Fund

Phyllis M. Baron Trust

Nancy and Donald Bliss

Edward F. Gerber

Champions (\$5,000 - \$9,999)

Robert N. Alfandre Foundation

The Dorothy G. Bender Foundation

Cynthia and Anthony Petrello

Louis DeJoy and Aldona Wos Family Foundation

Leaders (\$2,000 - \$4,999)

Cannon-Crowe Family

Arthur A. Cohen

Nicole A. Halbreiner

Gregory Hoss and Lars Etzkorn

Henrietta and Christopher W. Keller

Preservationists (\$1,000 - \$1,999)

Sherrie Beckstead

Zachary J. Burt and Nicolas Hudak

Dr. and Mrs. John Milton Cooper, Jr.

Lisa Halperin and Jonathan Coopersmith

Caren and Joel Danies

John Paul Doyle

Kevin Eckstrom

Susan and Greg Farha

Anne R. Kline and Geoff Pohanka

Leslie K. Koelsch

Marlene A. Malek

Darina and Allan McKelvie

Willee and Finlay Lewis

Dr. Dianne T. McRae

Kelly Dinglasan Minton and Joel Minton

Victoria Perry

Nnenna Peters

Rebecca Boggs Roberts

Jan Smith

Dorothy M. and Ken Woodcock

DONORS

Stewards (\$500- \$999)

Anonymous
 Lloyd and Charlene Austin
 Lisa Barry
 Sanders H. Berk, M.D.
 and Sally Berk
 Lysa Van Beuren
 Neenu and Vijay Bhargava
 Darcy Bisset
 Alexandra de Borchgrave
 Stuart J. Brahs and Carol Kless
 Ann Brown
 Connie Carter and Gordon Dale
 Sweta Chakraborty
 Johanna Chanin
 Connie Coopersmith
 Linda and Eli Frank
 Edie A. Fraser
 Joan Gervino and Fred Gorsen
 William and Betty Greenberg
 Carlos and Edilia Gutierrez
 Barbara D. Hawthorn
 Olga Ortiz Mera de Henrichsen
 Jenny Hills and Craig Asher
 Amanda Innes
 Cliftine Jones
 Timothy Q. Karcher
 Lexy Kessler and Irene Tzamaras
 Lisa Kim and John Tribolati
 Adele Malpass
 Marie Pierre Mbok
 Anita B. McBride
 Thomas and Donna McLarty
 Nina McLemore
 Helen McNeil
 Natalie and David Miller
 Yahne Miorini
 Anne Moulakis
 Fran and Nathan Nachlas
 Annie and Mihn Nguyen
 Phuong Pham
 Robin K. Phillips
 Elizabeth Dial and Jim Pinkerton
 Janet and Joel Pitt
 Jan Du Plain
 Alison Powers and George S. Sexton, III
 Alice Quinn
 Lola Reinsch
 Natalie Robinson
 Faye and Mike Rokni
 Loretta Sanchez
 Mary Ellen Scherl

Lisa and Joel Shine
 Bill and Farron Smith
 Kathy and David Smoley
 Carl Spatz and David Hesselbrock
 Victoria Stewart and Alexander Cohen
 Lyn Stout
 Bill and Marjorie Dick Stuart
 Brenda and Jacques de Suze
 Katherine H. Tachau, Ph.D
 John and Betty Ann Tanner
 The Thomas Family
 Annie Simonian Totah
 Stanley Watters and William Davis
 Nanci and Bruce Weissgold
 Angela Caveness Weisskopf
 Sharon Wilkes and Robert Kinberg
 The Women's Diplomatic Series
 Nahyun Yoo

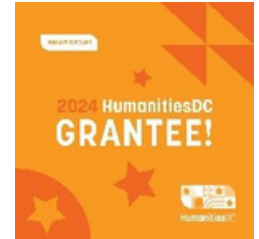
Supporters (\$250 - \$499)

Farahnaz Abazary
 Anita Abdesahian
 Sherrie R. Agresti-Goggi
 Donna Ari
 Yasmine Askalani
 Ann Jaime Banks
 J. Max Barger
 Sheila Beck
 Robert Burchetta
 Mary Catlin
 Donald and Lisa Cohen
 Stephen Cohen
 Caroline Croft
 Tracy DeJong
 Edward F. Duffy
 Susan Dunlevy
 Nadine Epstein
 Emila Newell Ferrara
 Sabina Fogle
 Celina Gerbic
 Ann Gilbert
 Brent David Glass
 Charles Grizzle
 Robert Hasty
 Amy Heller
 Timothy Hennessey
 Melanie Hoffman
 Lori Horkan
 Hilary Jochmans
 Mark Joyce
 Diane P. Kim
 Halima Magoma-Redd
 Sharmin Mahmud
 Michele Manatt
 Ann McElwain
 Beth Mendelson
 Elizabeth Merritt
 Emina Cunmulaj Nazarian
 Maura O'Neil
 Shauna Pickering
 Valerie Post
 Susan Rappaport
 Irene Rosenthal
 Marie Royce
 Debra Schiff
 Anita M. Schmied
 Carol Schwartz
 Louise I. Shelley
 Dana Smith
 Jeffrey D. Stitz
 Sheila Switzer
 Gary Taverman
 Pauline Thompson
 Lesley Visser
 Joann M. Weiner
 Janet Whitman
 Stacey Williams
 Patty Winterton

PARTNERS



National Trust for
Historic Preservation™



WEARABLE ART MUSEUM

WOMEN'S CLUB OF
CHEVY CHASE



THE GRILLS FUND



NINA MCLEMORE

SHERIDAN-KALORAMA
NEIGHBORHOOD ASSOCIATION



Thank you for your support!

BE A PART OF OUR STORY:

WilsonHouse@WoodrowWilsonHouse.org

FOR EVENT INQUIRIES:

Events@WoodrowWilsonHouse.org

President Woodrow Wilson House

A Site of the National Trust for Historic Preservation

**2340 S Street, NW
Washington, DC 20008**

202-387-4062

www.WoodrowWilsonHouse.org



The President Woodrow Wilson House is a 501(C)3 and depends on charitable donations to keep our doors open. It is only through YOUR generosity that we can continue offering excellent programming and save this place for future generations.

Scan this QR code to give today.

**Charity
Navigator**



A Candid [Platinum Seal of Transparency](#) on GuideStar is the highest attainable level. We hope this transparency gives you confidence in our commitment to our mission, vision, and accomplishments. To learn more, visit candid.org.