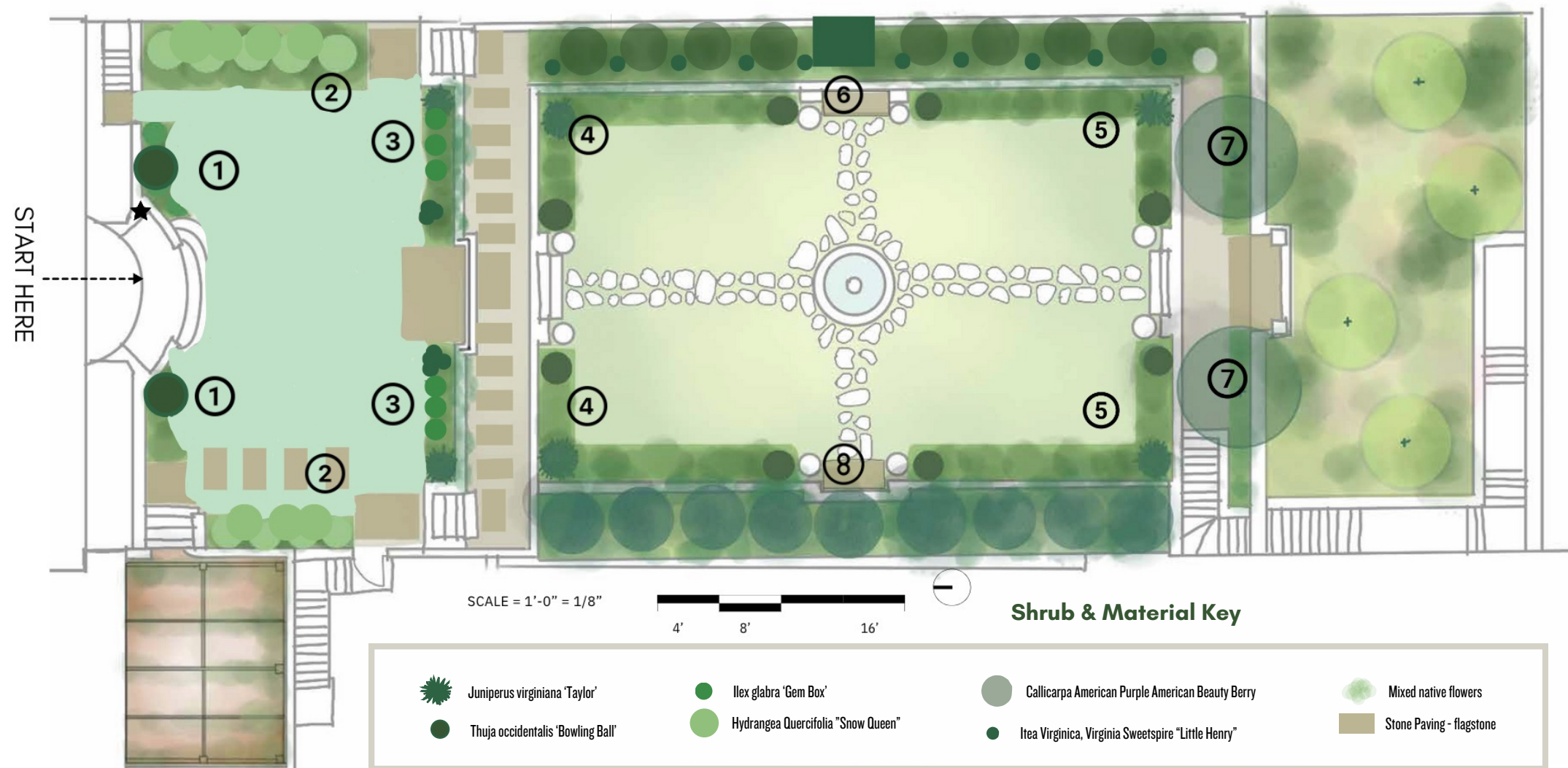


Native Plant Garden Guide



① *Thuja occidentalis*
'Mr. Bowling Ball' -
American Arborvitae

② *Hydrangea quercifolia*
'Snow Queen'
Oakleaf Hydrangea

③ *Juniperus virginiana*
'Taylor'
Eastern Red Cedar
Ilex glabra
'Gem Box'
Inkberry Holly
Thuja occidentalis
'Mr. Bowling Ball'
American Arborvitae

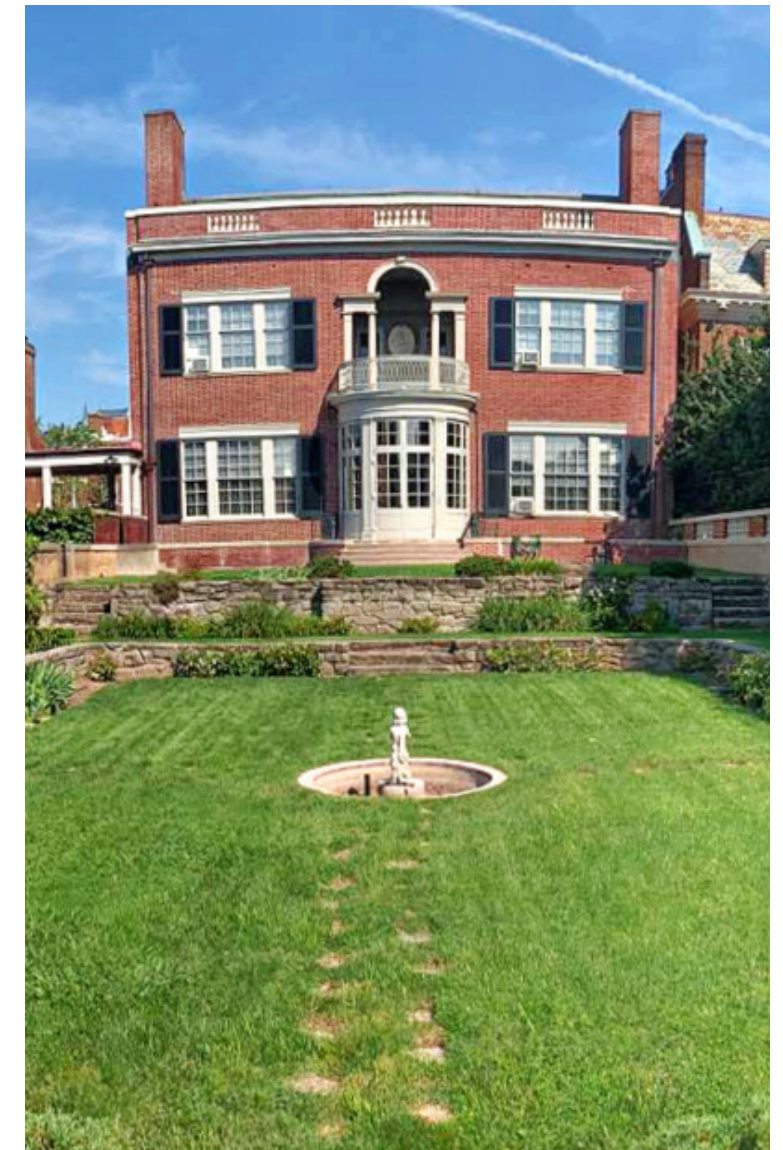
④ *Thuja occidentalis*
'Mr. Bowling Ball' - American Arborvitae
Juniperus virginiana
'Taylor' - Eastern Red Cedar
Mixed Native Flowers

⑤ *Thuja occidentalis*
'Mr. Bowling Ball' - American Arborvitae
Juniperus virginiana
'Taylor' - Eastern Red Cedar
Itea virginica
'Little Henry' - Virginia Sweetspire
Mixed Native Flowers

⑥ *Callicarpa americana*
Purple American
Beautyberry
Itea virginica
'Little Henry'
Virginia Sweetspire

⑦ *Gordlinia grandiflora*
'Sweet Tea'
Sweet Tea Mountain
Gordlinia

⑧ *Magnolia grandiflora*
'Little Gem'
Dwarf Southern Magnolia



The President Woodrow Wilson House

Native Plant Garden Guide

Why native plants

at our museum?

Native plants are adapted to the local climate and soil conditions where they naturally occur. Native plants do not need fertilizer and require much less water than non-native plants. Most importantly, they are a reminder of our civic responsibility to sustainably steward our planet. Woodrow Wilson established the National Park Service in 1916. Conservation was an essential element of his progressive agenda. The Wilson House strives to create a place that is safe for flora, fauna, and our guests! It is our collective duty to maintain this urban green space, ensuring that it remains a thriving habitat and a place of learning, relaxation, and enjoyment for future generations.

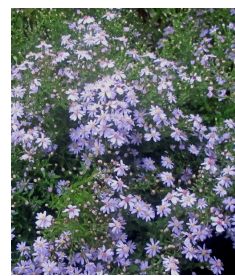
Mixed Native Flowers



**Achillea
millefolium**



**Amsonia
hubrichtii**



**Aster
cordifolius**

Mixed Native Flowers



**Baptisia
australis**



**Heuchera
micrantha**



**Iris
versicolor**



**Penstemon
digitalis**



**Phlox
paniculata**



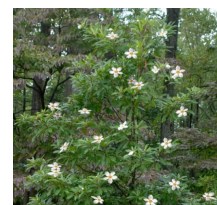
**Pycnanthemum
flexuosum**

Trees & Shrubs



Callicarpa americana

Purple American Beautyberry
The Beautyberry has small white to pink flowers in the summer and purple to red-violet berries in the fall.



Gordlinia grandiflora

'Sweet Tea' Sweet Tea Mountain Gordlinia
The large white flowers have a light, sweet fragrance that bloom July through September.



Hydrangea quercifolia

'Snow Queen' Oakleaf Hydrangea
This Hydrangea is deciduous which means it sheds its leaves annually. Most Hydrangeas are deciduous plants.

Trees & Shrubs



Ilex glabra

'Gem Box' Inkberry Holly
The Gem Box ilex is a ball-shaped plant that has small dark green leaves with red tips during the spring flush.



Itea virginica

'Little Henry' Virginia Sweetspire
Little Henry is native to North America and pollinator friendly. It has lightly fragrant white flowers that bloom profusely.



Juniperus virginiana

'Taylor' Eastern Red Cedar
This cedar has a very narrow, upright growth habit and has green-blue foliage.



Magnolia grandiflora

'Little Gem' Dwarf Southern Magnolia
'Little Gem' grows to a mature size of about 25 ft. tall and 10-15 ft. wide. It still has the large white flowers expected from a larger magnolia tree.



Thuja occidentalis

'Mr. Bowling Ball' American Arborvitae
This plant has threadlike, lacy foliage and is a naturally rounded dwarf shrub.

Scan for more info



THE PRESIDENT
WOODROW WILSON HOUSE

