



Woodrow Wilson House  
Volunteer Scholar  
Spring 2024

---

Annika Rickbeil



# About Me!

---

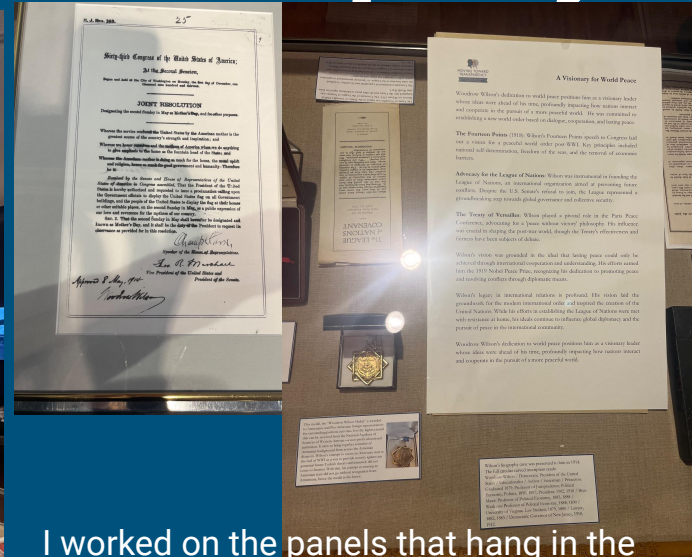
- I just finished up my junior year at Concordia College in Moorhead, MN but am originally from Billings, MT
- I am a Heritage and Museum Studies and Art History double major and English minor
- I was able to spend my spring semester in DC through the Lutheran College Washington Semester



# Work at Woodrow Wilson House—Exhibit opening



I got to WWH about two weeks before the opening of Moving Through Transparency so I had the opportunity to help with the final set up of the exhibit!



I worked on the panels that hang in the exhibit room; I helped Edith with choosing, retrieving, and placing the objects in their display cases. I was also able to research and help write some of the description cards for the items.



# Girl Scouts



I had the opportunity to help with the girl scouts one Saturday—they were earning their 'craft and tinker' badges this time!



# Fashioning Power, Fashioning Peace

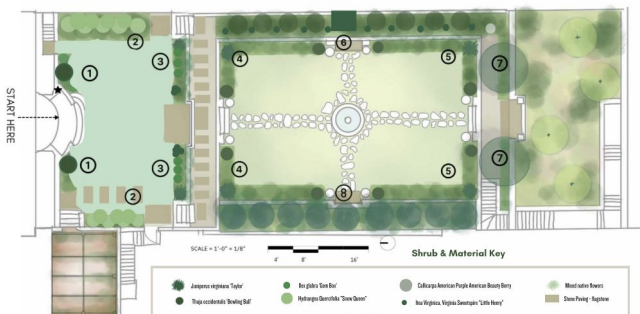
I also helped with many different aspects leading up to the Fashioning Power, Fashioning Peace event: helping create mailing lists, research, etc.





# Garden Tour Brochure

## Native Plant Garden Guide



- ① *Thuja occidentalis*  
"Mr. Bowling Ball" - American Arborvitae
- ② *Hydrangea quercifolia*  
"Snow Queen"  
Oakleaf Hydrangea
- ③ *Juniperus virginiana*  
"Taylor"  
Eastern Red Cedar
- ④ *Ilex glabra*  
"Gem Box"  
Inkberry Holly
- ⑤ *Thuja occidentalis*  
"Mr. Bowling Ball"  
American Arborvitae
- ⑥ *Calliopsis americana*  
Purple American Beautyberry
- ⑦ *Ilex virginica*  
"Little Henry"  
Virginia Sweetspire
- ⑧ *Magnolia grandiflora*  
"Little Gem"  
Sweet Tea Mountain Magnolia
- ⑨ *Juniperus virginiana*  
"Taylor" - Eastern Red Cedar
- ⑩ *Thuja occidentalis*  
"Mr. Bowling Ball" - American Arborvitae
- ⑪ *Mixed Native Flowers*



The President Woodrow  
Wilson House

## Native Plant Garden Guide

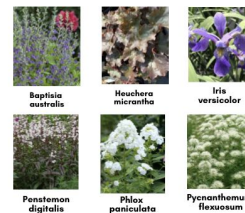
## Why native plants at our museum?

Native plants are adapted to the local climate and soil conditions where they naturally occur. Native plants do not need fertilizer and require much less water than non-native plants. Most importantly, they are a reminder of our civic responsibility to sustainably steward our planet. Woodrow Wilson established the National Park Service in 1916. Conservation was an essential element of his progressive agenda. The Wilson House strives to create a place that is safe for flora, fauna, and our guests! It is our collective duty to maintain this urban green space, ensuring that it remains a thriving habitat and a place of learning, relaxation, and enjoyment for future generations.

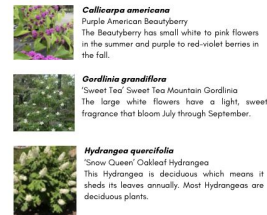
## Mixed Native Flowers



## Mixed Native Flowers



## Trees & Shrubs



## Trees & Shrubs



Scan for more info



The President  
Woodrow Wilson House

